

# 100 VINTAGE

## Technical data (Data may vary depending on type of fuel used)

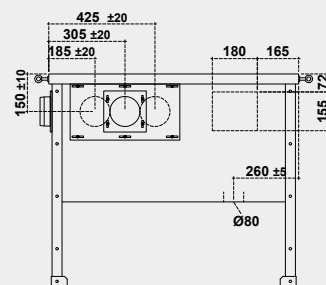
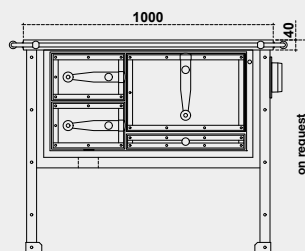
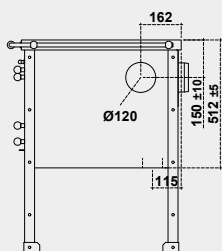
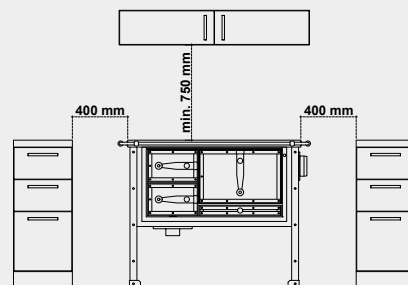
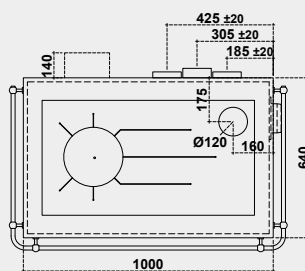
Fuel	Wood
Energy class	A+
Heating capacity	8 kW
Performance	83,8 %
Diameter smoke outlet	Ø 120 mm
Minimum draught	12 Pa / 0,12 mbar
Temperature smoke outlet	212 °C
Smoke mass	6,6 g/s
CO at 13%O <sub>2</sub>	0,11 %
Weight	210 kg
Optional smoke outlet	5
Test report	C-1076392-1 rev.01
VKF AEA1 - No.	16685
Firebox opening Trend/Dekor version (L x H)	200 x 165 mm
Firebox opening Panorama version (L x H)	205 x 180 mm
Firebox measurements (L x D x H)	255 x 400 x 260 mm
Drawer measurements (L x D x H)	-
Oven (L x D x H)	400 x 420 x 265 mm
Cooking hob (L x D)	850 x 460 mm
External air intake	Ø 80 mm
CO at 13% O <sub>2</sub> (Carbon monoxide) / NO <sub>x</sub> (Nitrogen oxide)	1363,0 mg/Nm <sup>3</sup> / 52,0 mg/Nm <sup>3</sup>
Dust / OGC (Organic compounds)	39,0 mg/Nm <sup>3</sup> / 49,0 mg/Nm <sup>3</sup>

## WARNING: Minimum safety distance from flammable materials

From the rear and side connection to the chimney * 40mm of insulation with heat conductivity equal to 0.07 W/mK at 200°C	P= 0 + 40* mm Following agreement with chimney sweep
On the side above the plate	L= 400 mm
On the side below the plate (only with Air System fireproof protection unit)	L= 3 mm
Above the plate	Min. 750 mm
In the front from the middle of the fire door	R= 250 mm
Plate for floor protection	Based on specific country directives

**NB:** Available in right and left version

On request with Air System fireproof protection unit (optional)



Ein Unternehmen aus  
**SÜDTIROL**